

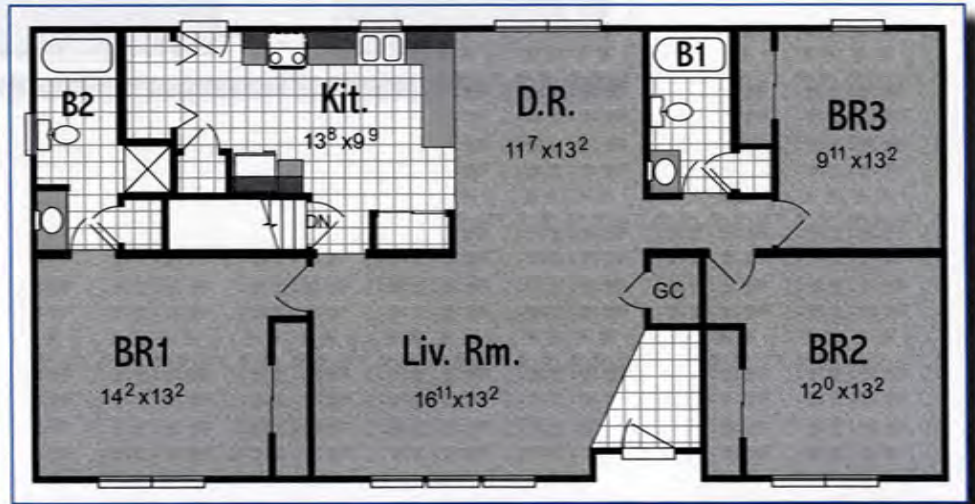
Crestwood IV
1,540 SF

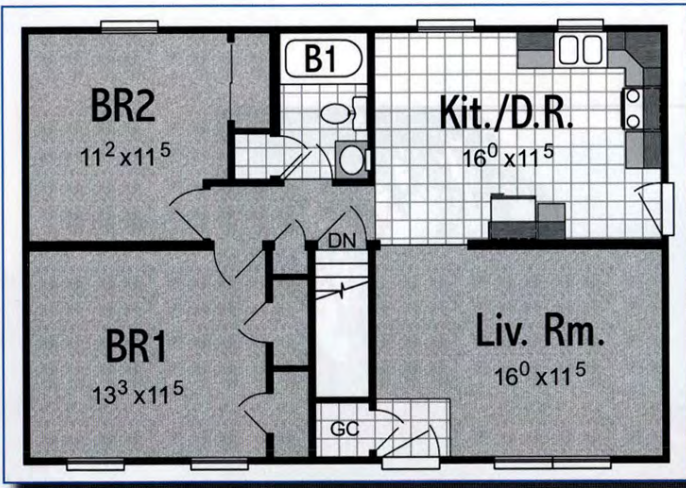


Ranch Plans

Crestwood IV

3 BR - 2 BA
27' 6" x 56'
1540 SF



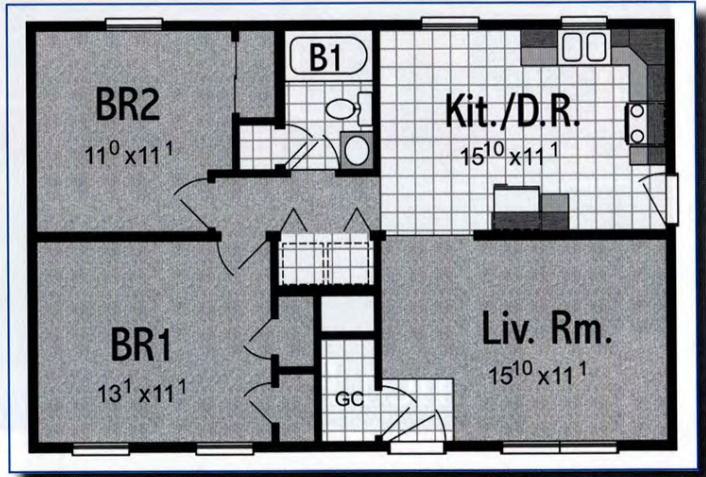


Nova I

2 BR - 1 BA
24' x 36'
864 SF

Nova I - Option

2 BR - 1 BA
24' x 36'
864 SF

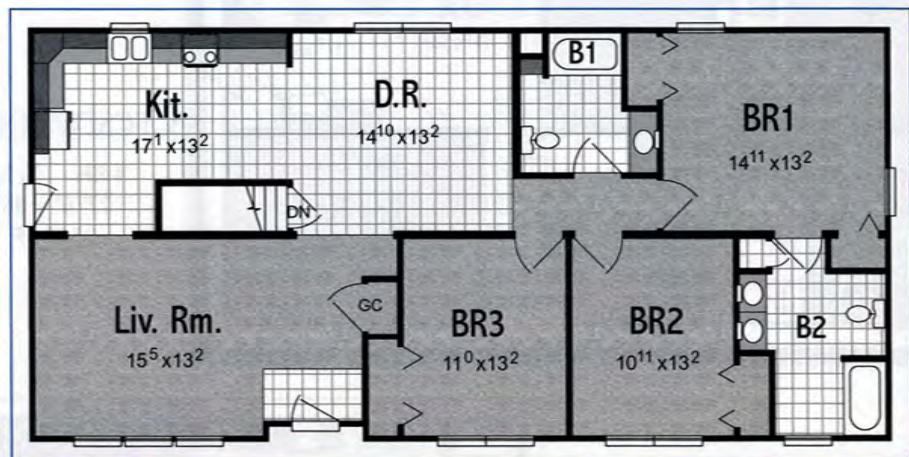


Crestwood III

4 BR - 1 1/4 BA
27' 6" x 56'
1540 SF

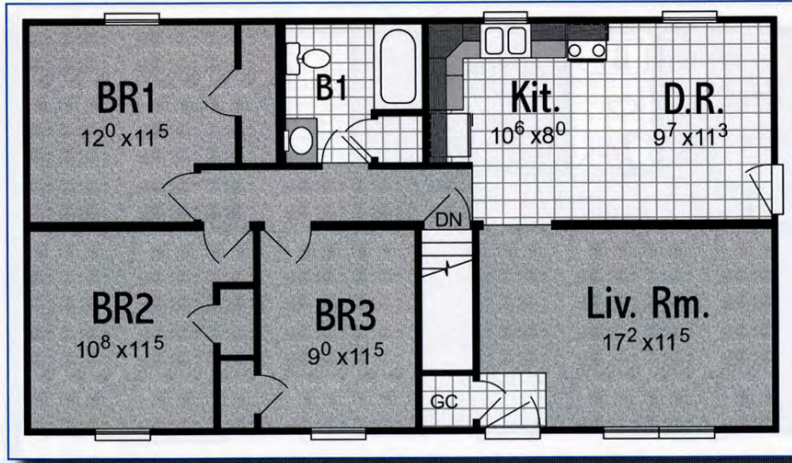
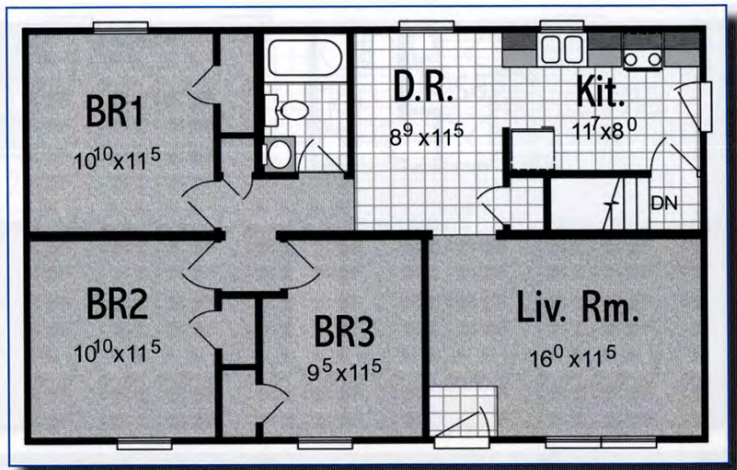
Crestwood V

3 BR - 2 BA
27' 6" x 58'
1595 SF



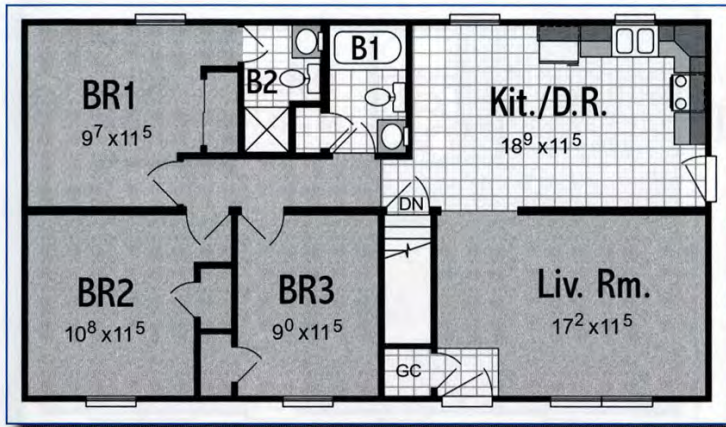
Independence III

3 BR - 1 BA
24' x 40'
960 SF



Independence V

3 BR - 1 BA
24' x 44'
1056 SF

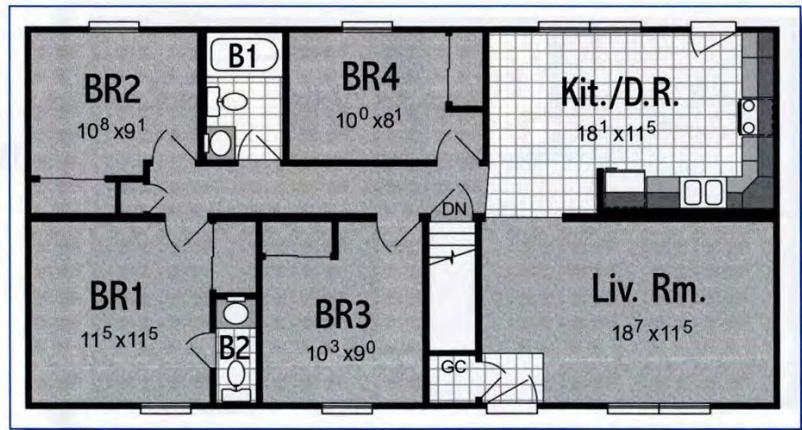


Nova IX

3 BR - 1 3/4 BA
24' x 44'
1056 SF

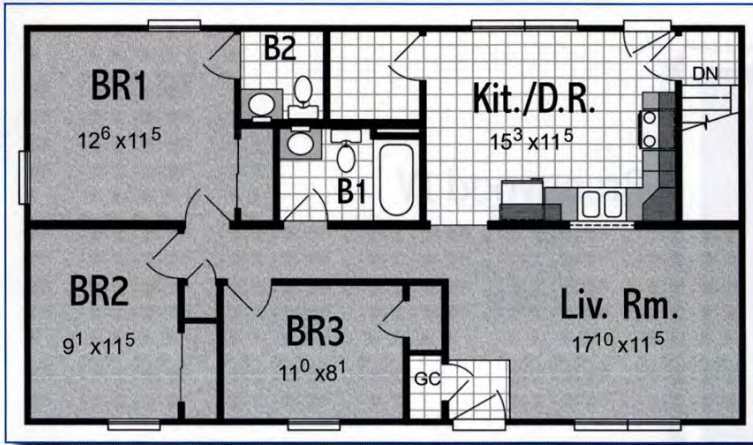
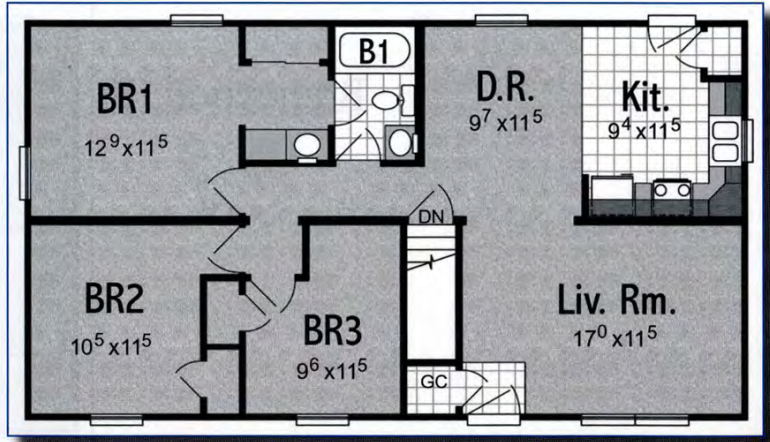
Nova XII

4 BR - 1 1/2 BA
24' x 48'
1056 SF



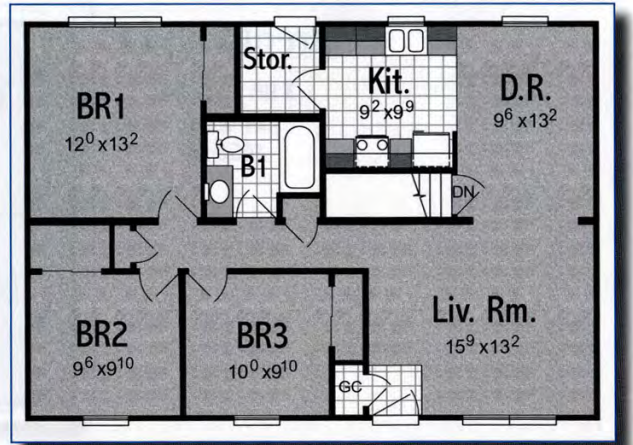
Brentwood I

3 BR - 1 3/4 BA
24' x 44'
1056 SF



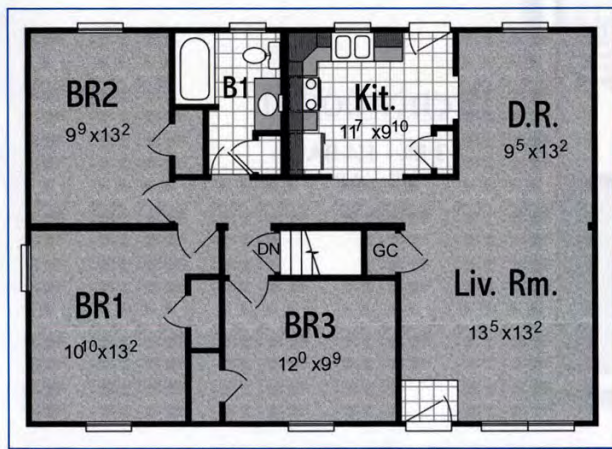
Brentwood II

3 BR - 1 3/4 BA
24' x 44'
1056 SF



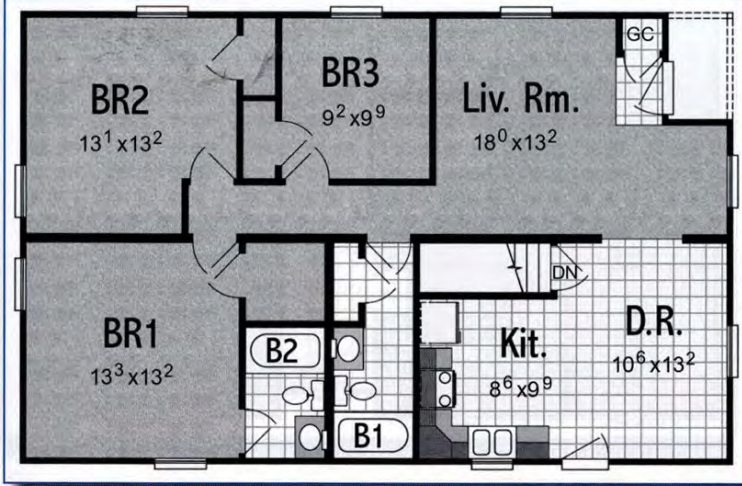
Brentwood III

3 BR - 1 BA
27'6" x 40'
1100 SF



Brentwood IV

3 BR - 1 BA
27'6" x 40'
1100 SF

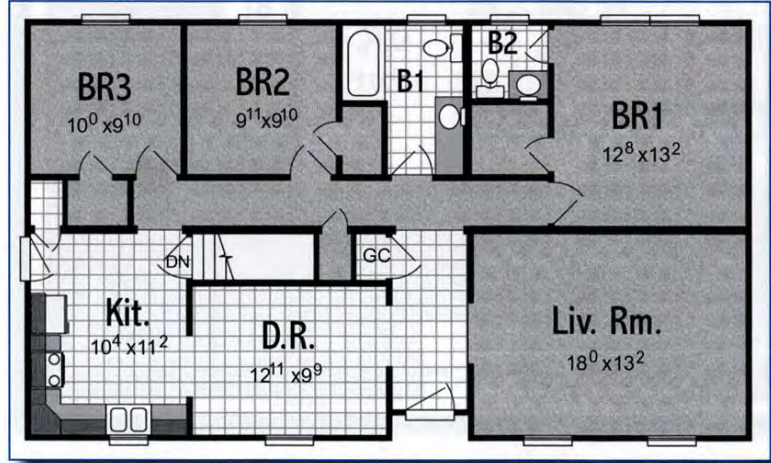


Liberty II

3 BR - 2 BA
27' 6" x 44'
1210 SF

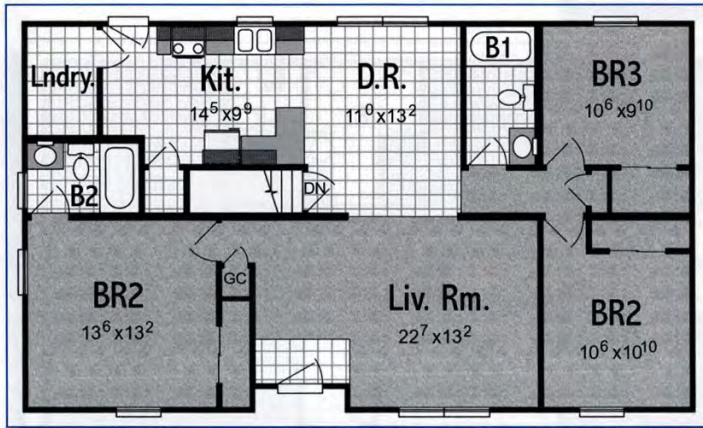
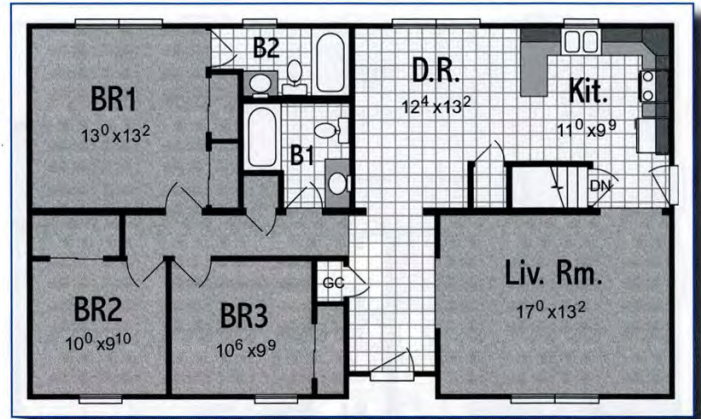
Lakewood II

3 BR - 1 1/2 BA
27' 6" x 48'
1320 SF



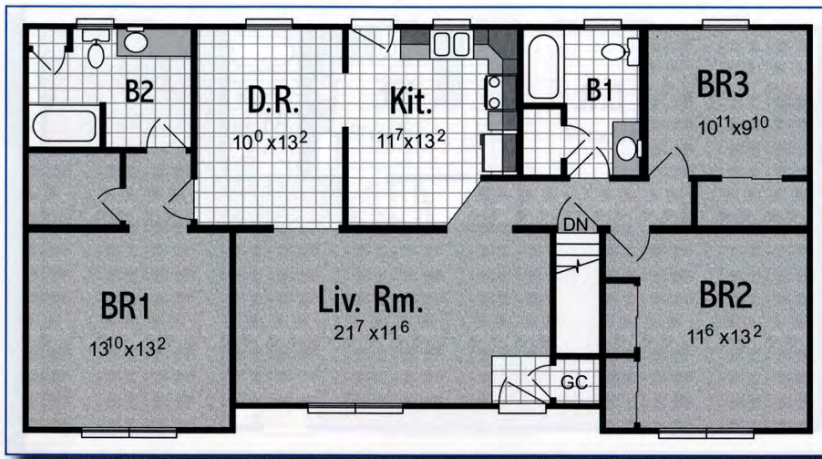
Lakewood III

3 BR - 2 BA
27' 6" x 48'
1320 SF



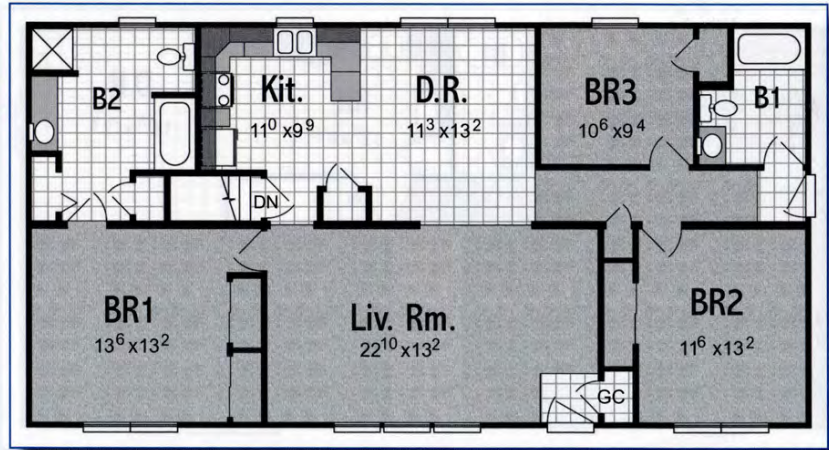
Lakewood IV

3 BR - 2 BA
27' 6" x 48'
1320 SF



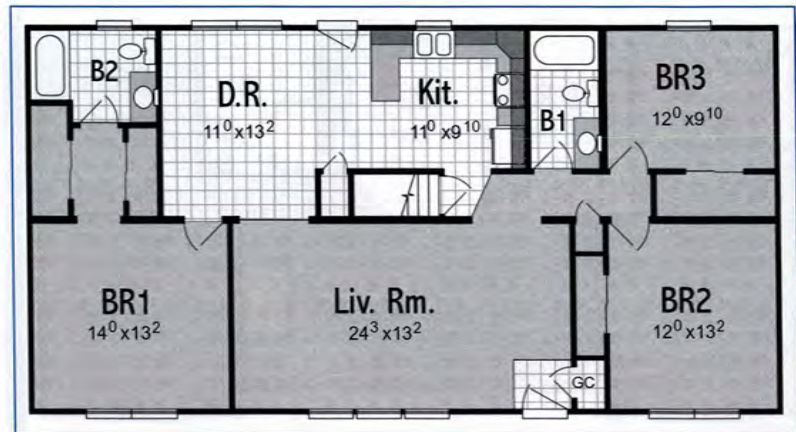
Pinewood II

3 BR - 2 BA
27' 6" x 54'
1485 SF



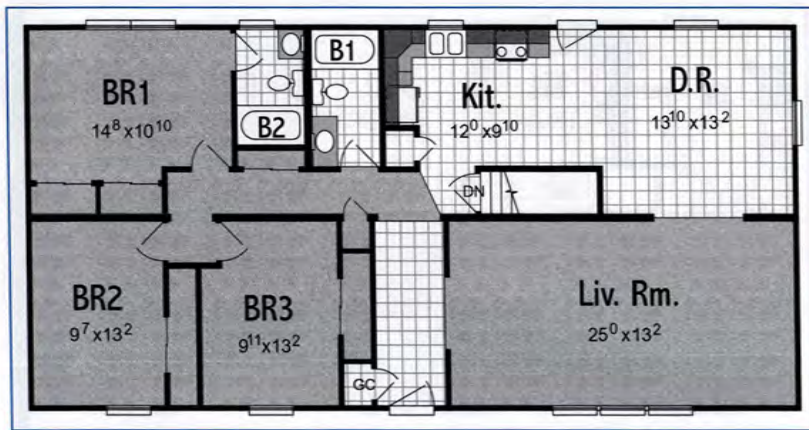
Pinewood III

3 BR - 2 BA
27' 6" x 54'
1485 SF



Pinewood IV

3 BR - 2 BA
27' 6" x 54'
1485 SF



Crestwood II

3 BR - 2 BA
27' 6" x 56'
1540 SF

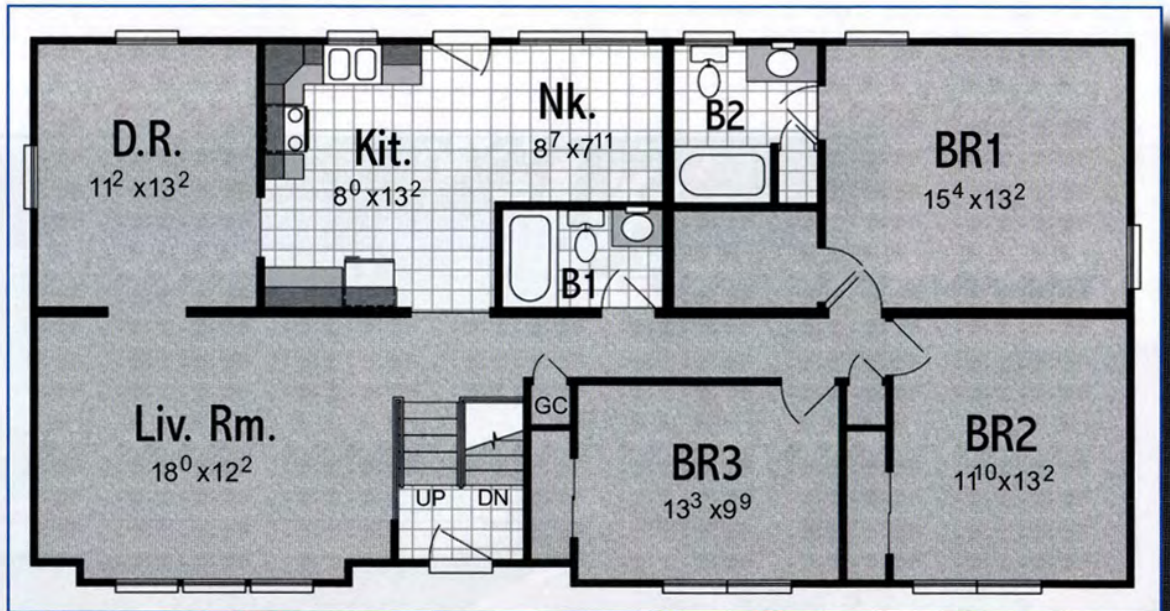


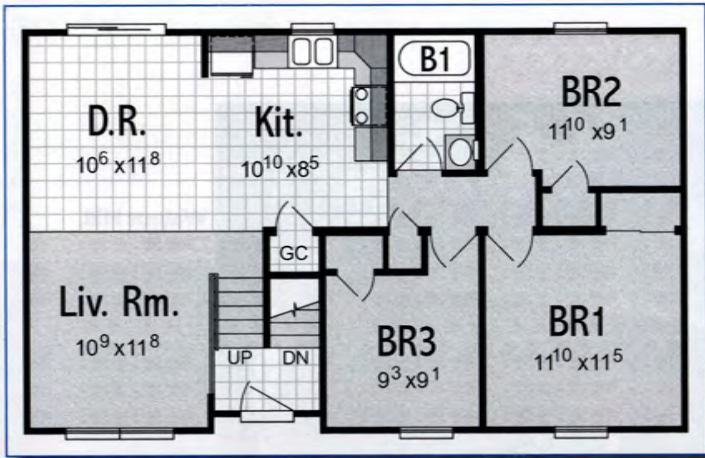
Walnut Hill
1,540 SF

Raised Ranch Plans

Walnut Hill IV

3 BR - 2 BA
27' 6" x 56'
1540 SF



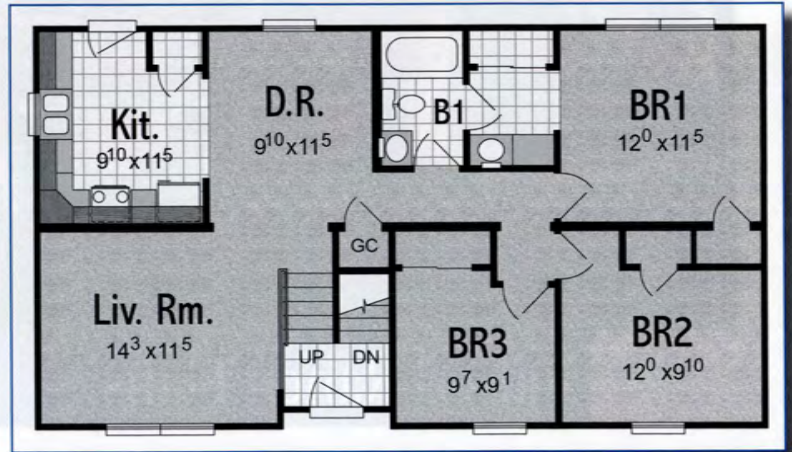


Beech Hill I

3 BR - 1 BA
24' x 40'
960 SF

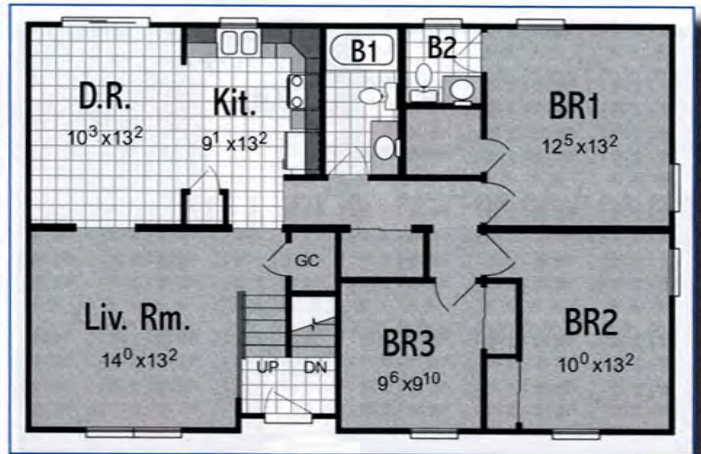
Beech Hill II

3 BR - 1 BA
24' x 44'
1056 SF



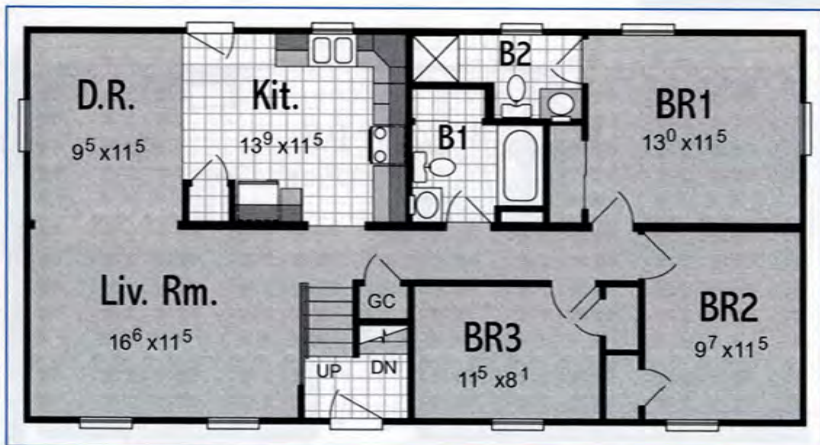
Beech Hill III

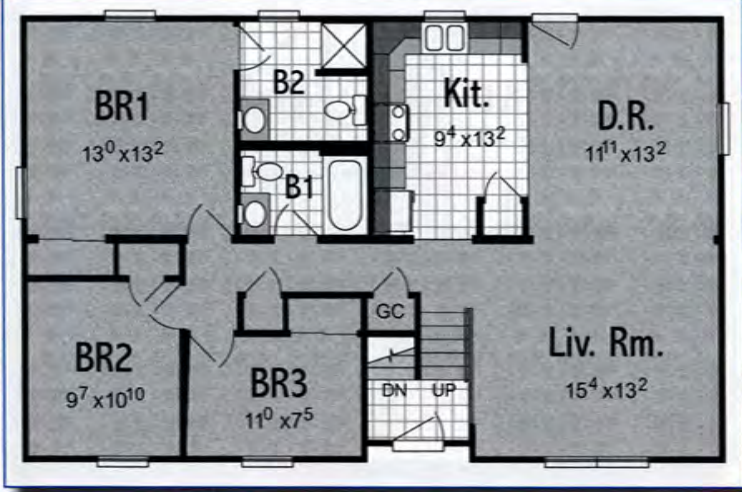
3 BR - 1 1/2 BA
27' 6" x 44'
1210 SF



Beech Hill IV

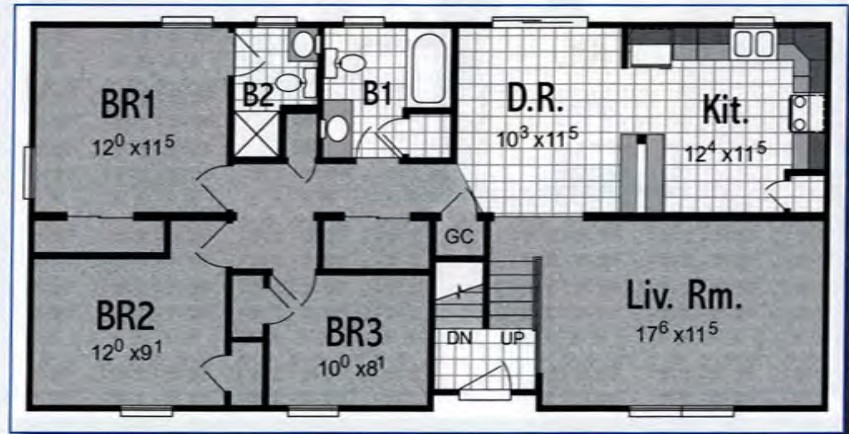
3 BR - 1 3/4 BA
24' x 48'
1152 SF





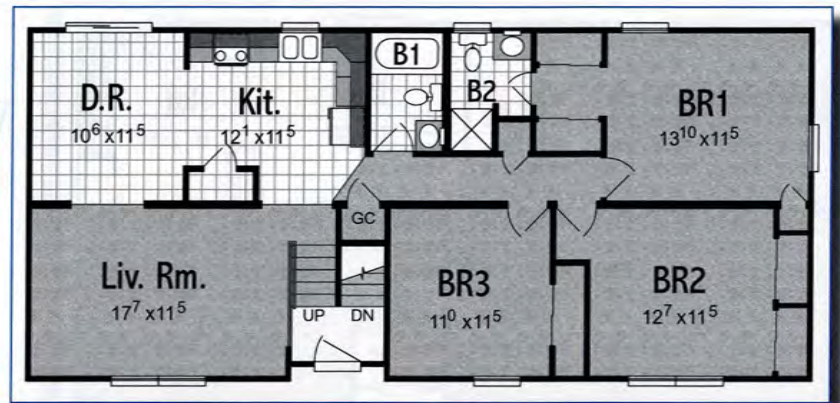
Cherry Hill I

3 BR - 1 3/4 BA
 27' 6" x 44'
 1210 SF



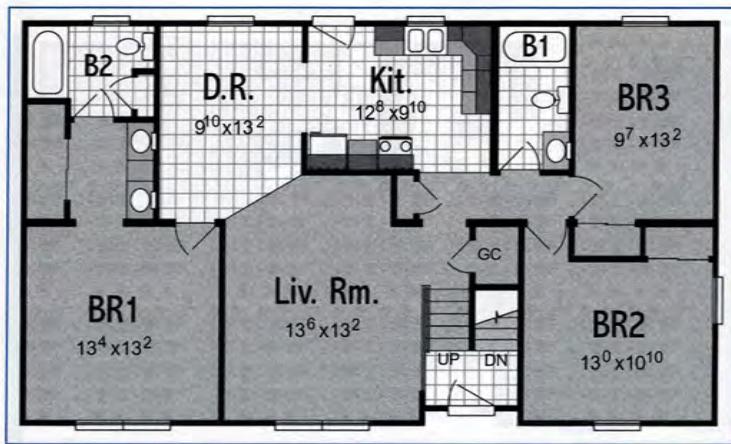
Cherry Hill II

3 BR - 1 3/4 BA
 24' x 50'
 1200 SF



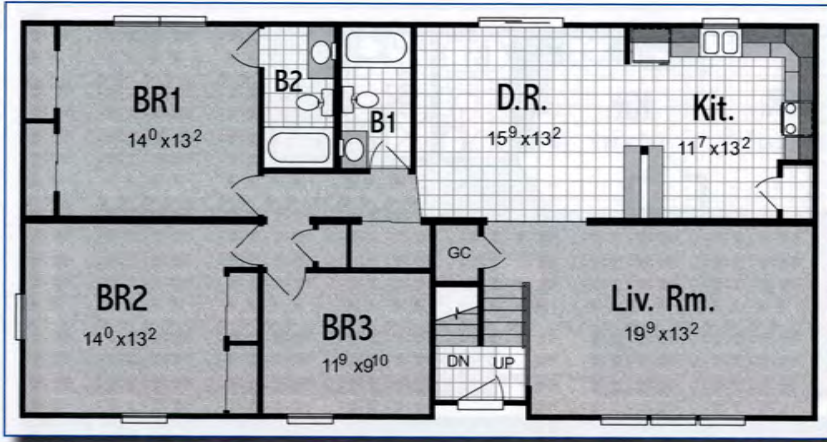
Cherry Hill III

3 BR - 1 3/4 BA
 24' x 54'
 1296 SF



Cherry Hill IV

3 BR - 2 BA
 27' 6" x 48'
 1296 SF

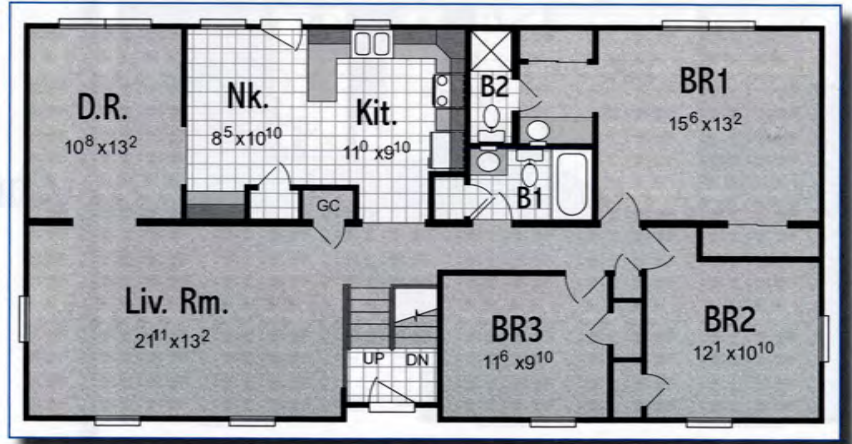


Walnut Hill I

3 BR - 2 BA
 27' 6" x 56'
 1540 SF

Walnut Hill II

3 BR - 1 3/4 BA
 27' 6" x 56'
 1540 SF



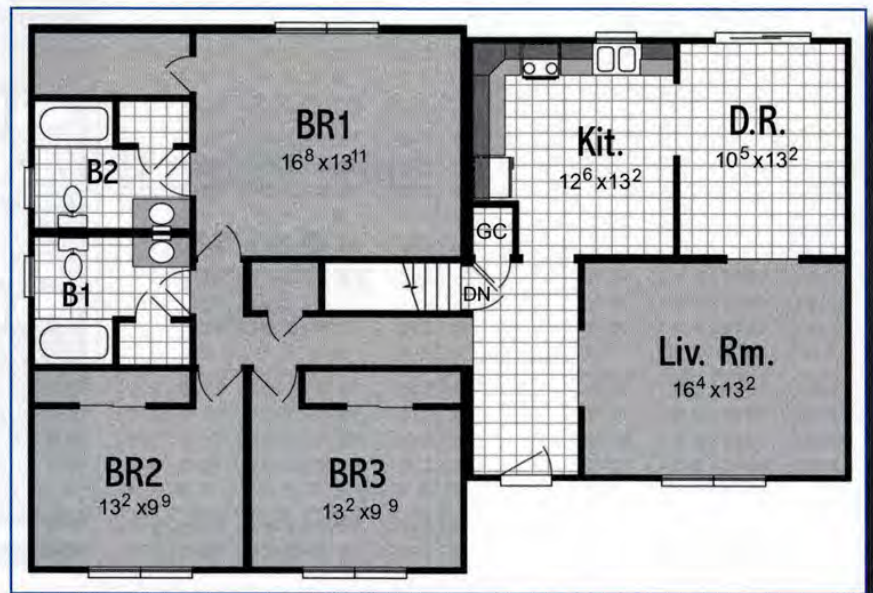
Timber Ridge
1,595 SF

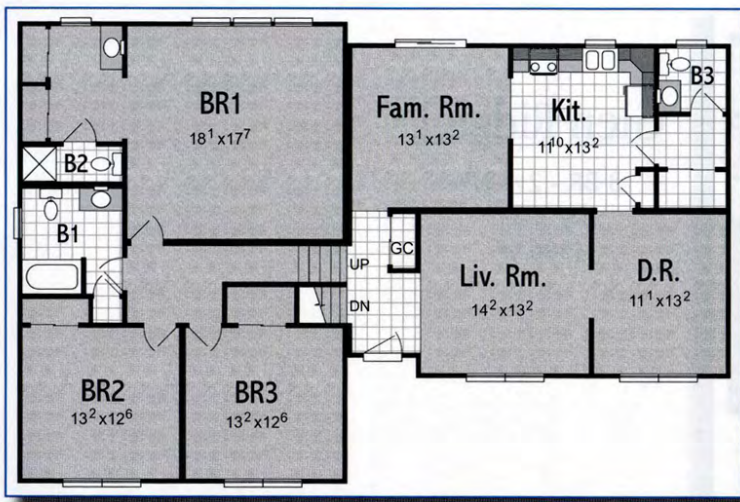


Split Level Plans

Timber Ridge I

3 BR - 2 BA
27' 6" x 24' 3/4"
1595 SF



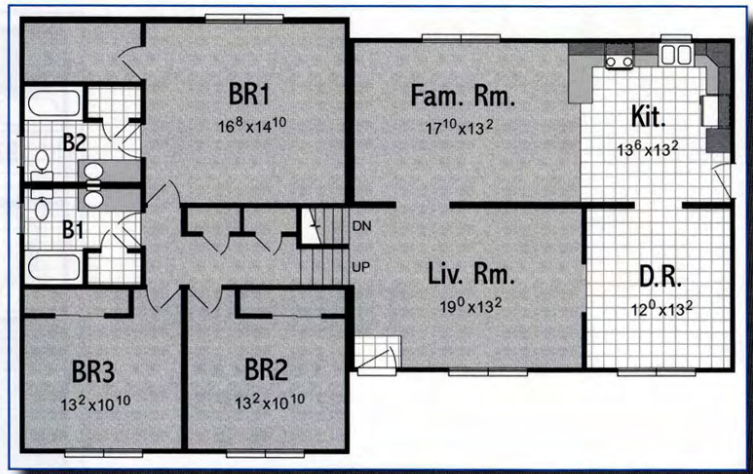


Timber Ridge II

3 BR - 2½ BA
 27' 6" x 38' 32"
 1925 SF

Lime Ridge II

3 BR - 2 BA
 27' 6" x 36' 32"
 1870 SF



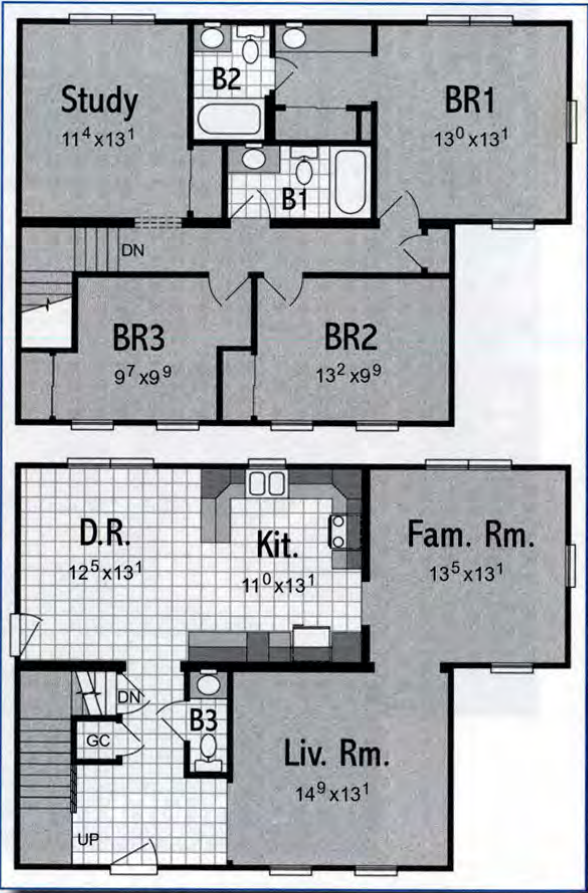
Glen Ridge I

3 BR - 2½ BA
 24' x 34'
 1586 SF



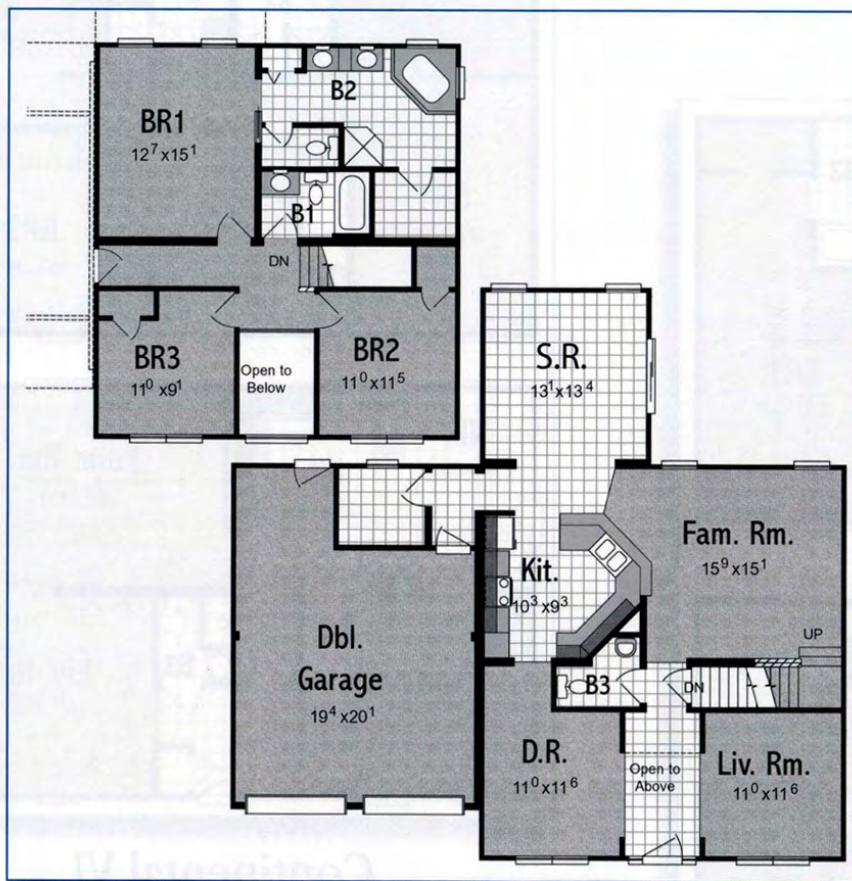
Meadowbrook
1870 SF

Two Story Plans



Meadowbrook

3 BR - 2½ BA
27' 6" x 30'/38'
1870 SF

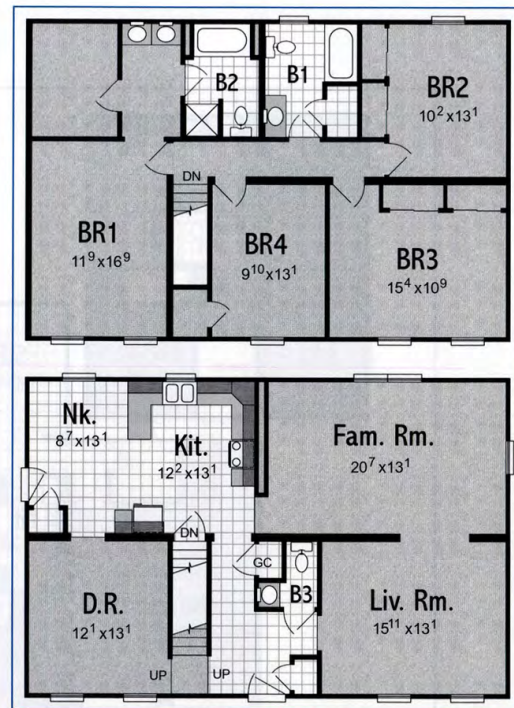
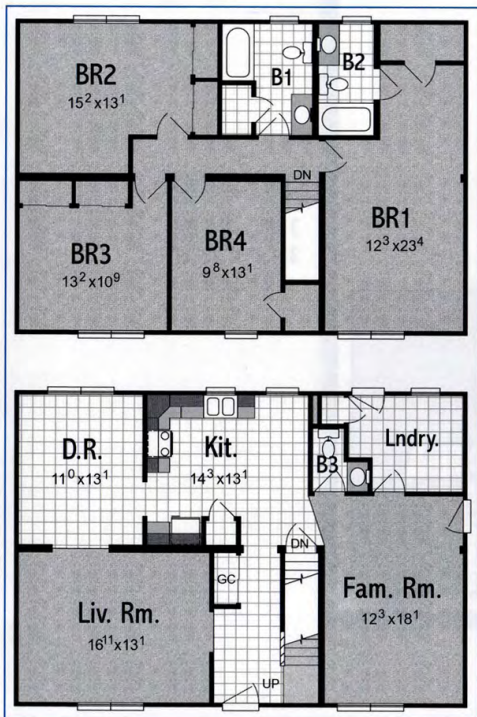


Somerset

3 BR - 2½ BA
 31' 6" x 29' 6"
 2133 SF

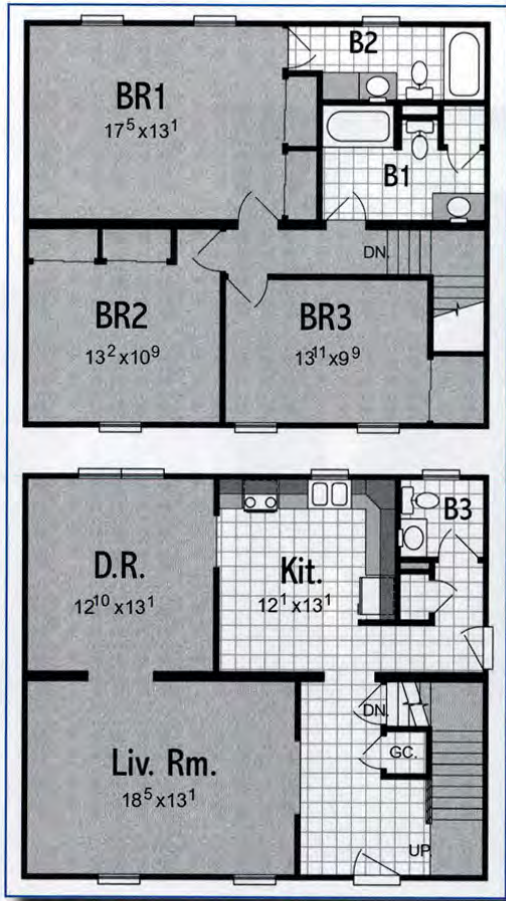
Continental III

4 BR - 2½ BA
 27' 6" x 40'
 2200 SF



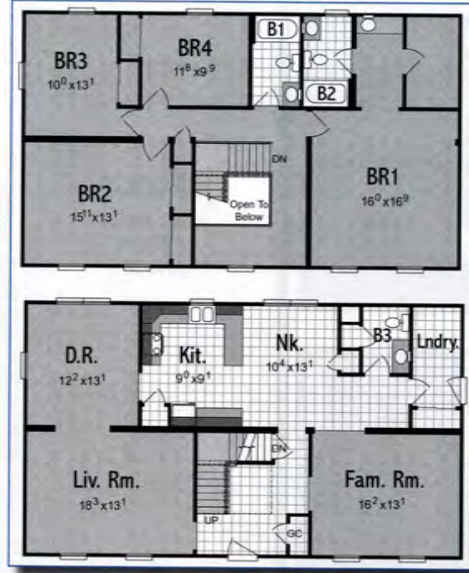
Continental VI

4 BR - 2½ BA
 27' 6" x 42'
 2310 SF



Walden

3 BR - 2½ BA
27' 6" x 32'
1760 SF

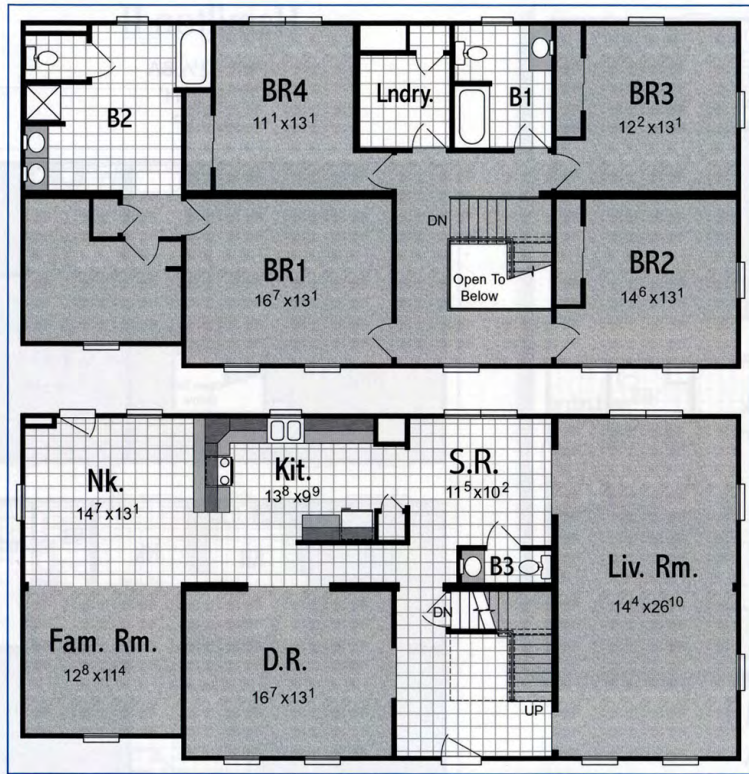
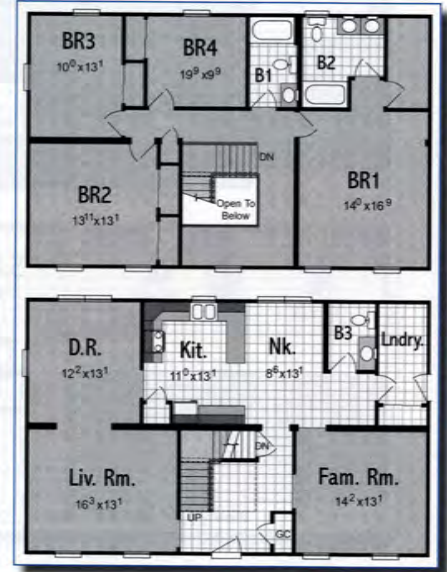


Hamilton I

4 BR - 2½ BA
27' 6" x 48'
2640 SF

Hamilton II

4 BR - 2½ BA
27' 6" x 44'
2420 SF



Jefferson

4 BR - 2½ BA
27' 6" x 48'
3190 SF

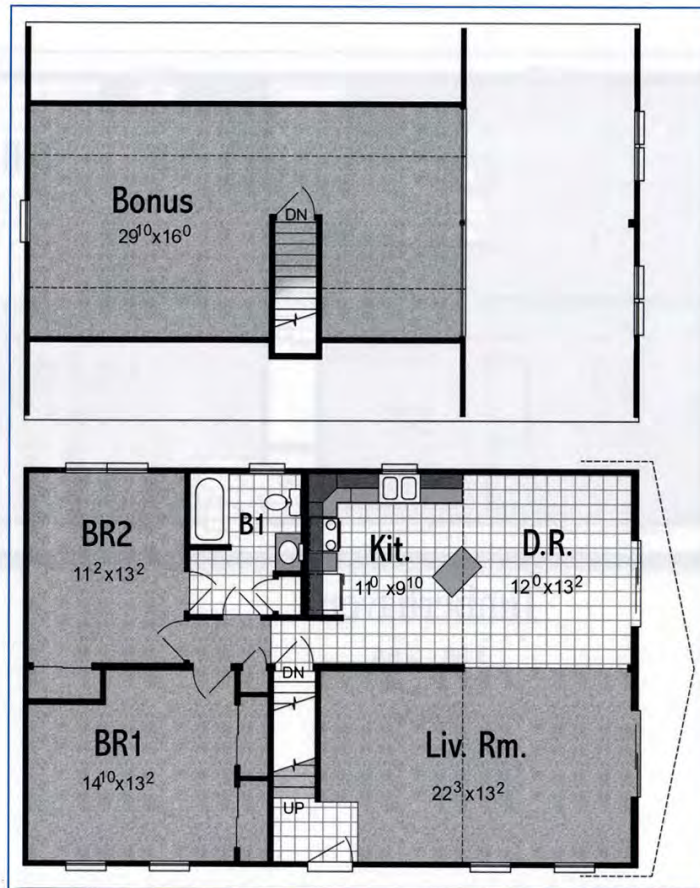


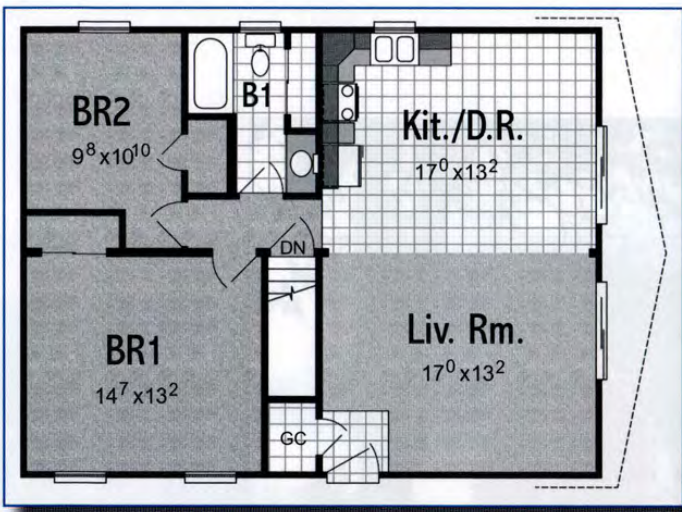
Catskill
1210 SF

Contemporary Plans

Catskill

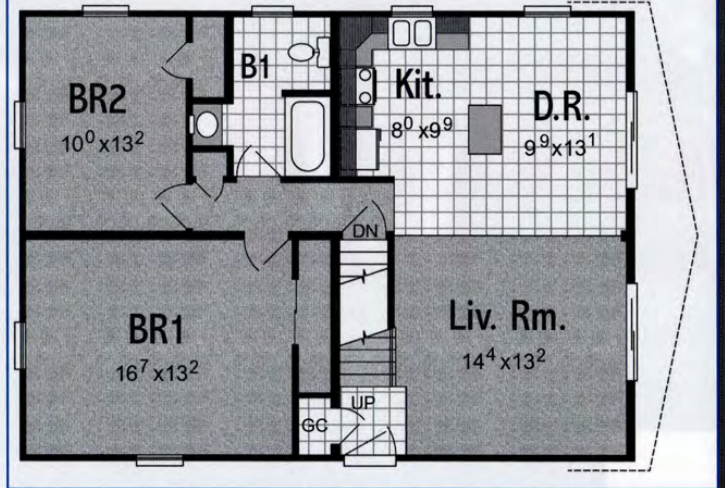
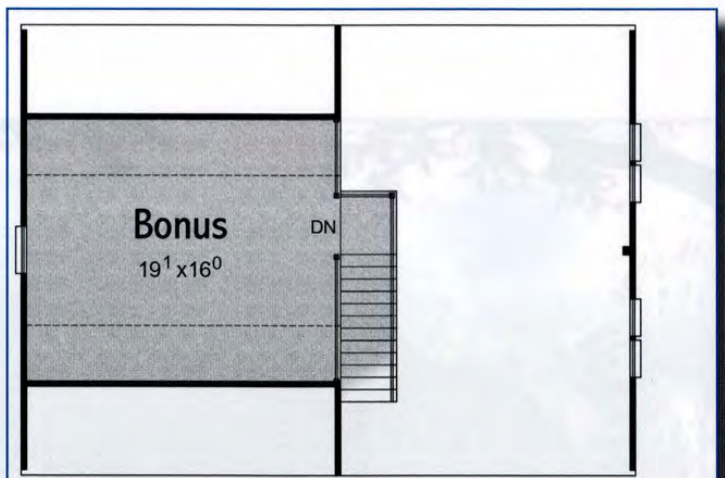
2 BR - 1 BA
27' 6" x 44'
1210 SF





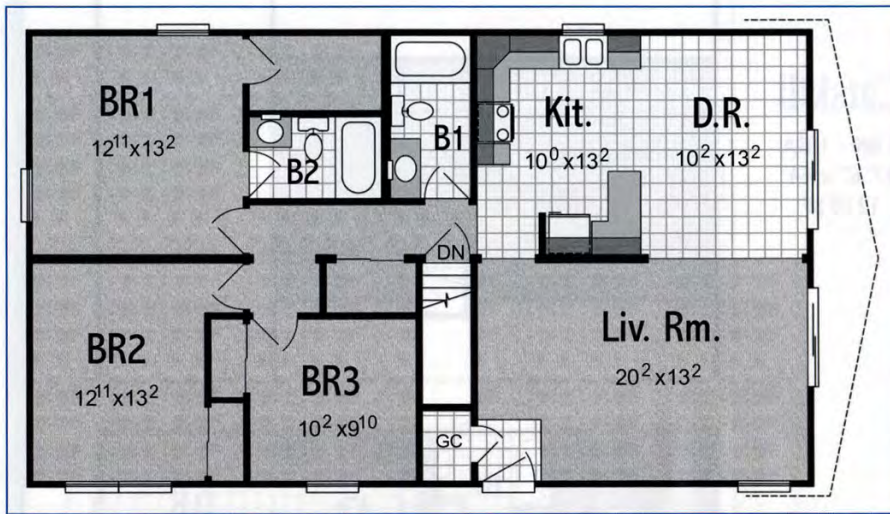
Crystal Lake

2 BR - 1 BA
 27' 6" x 36'
 990 SF



Mt. Laurel

2 BR - 1 BA
 27' 6" x 38'
 1045 SF

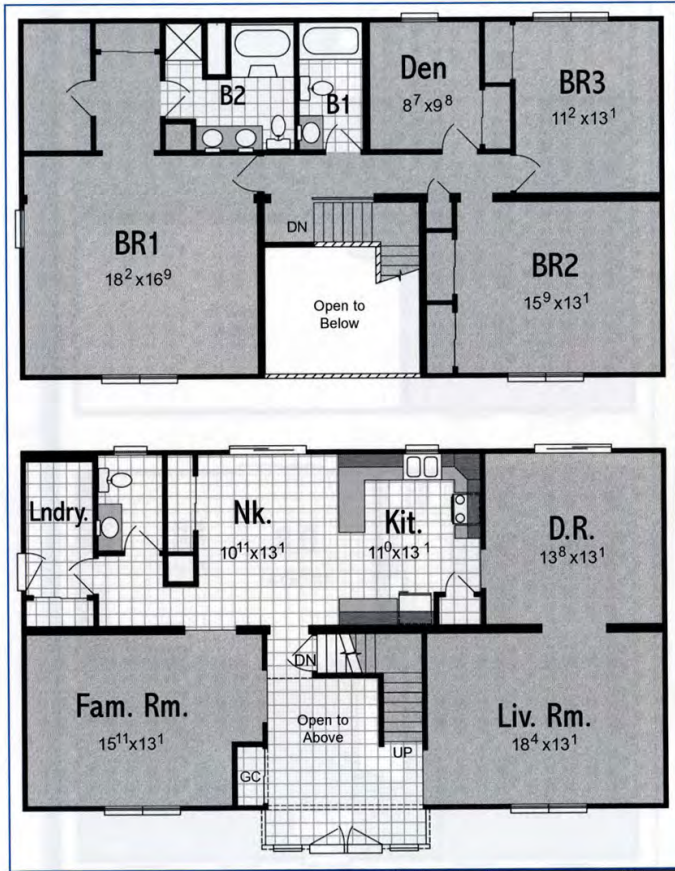
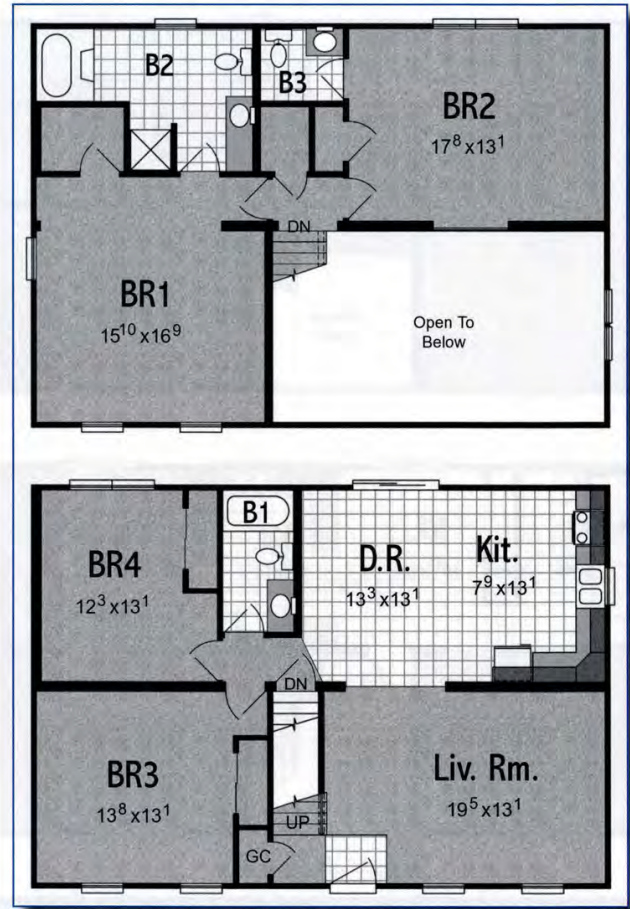


Timberhaven

3 BR - 2 BA
 27' 6" x 48'
 1320 SF

Malibu

4 BR - 2½ BA
27' 6" x 40'
2194 SF



Pocono

3 BR - 2½ BA
27' 6" x 50'
2750 SF

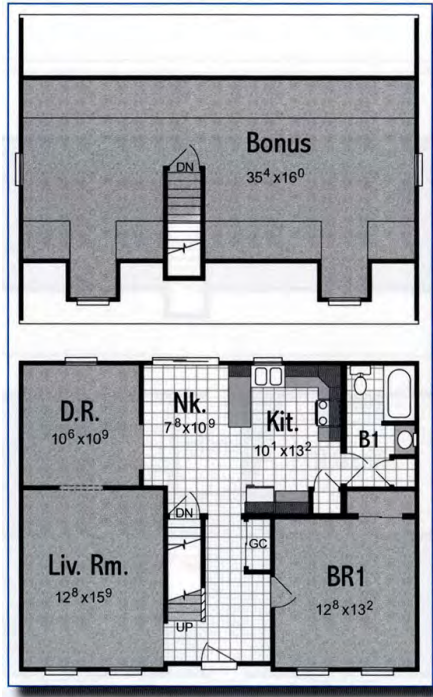
Cape Collins
990 SF



Cape Plans

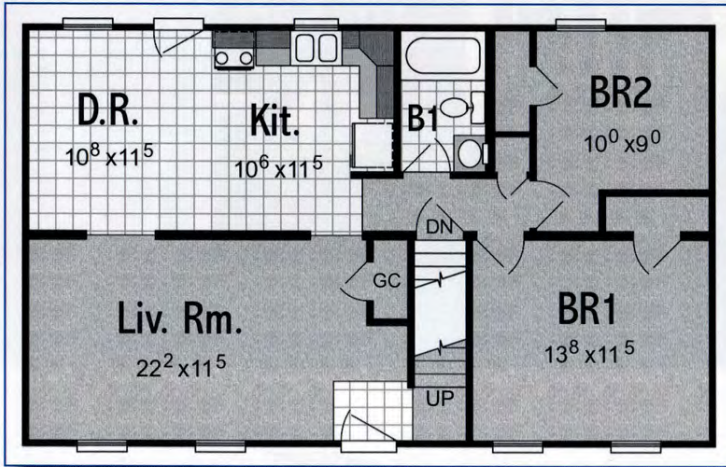
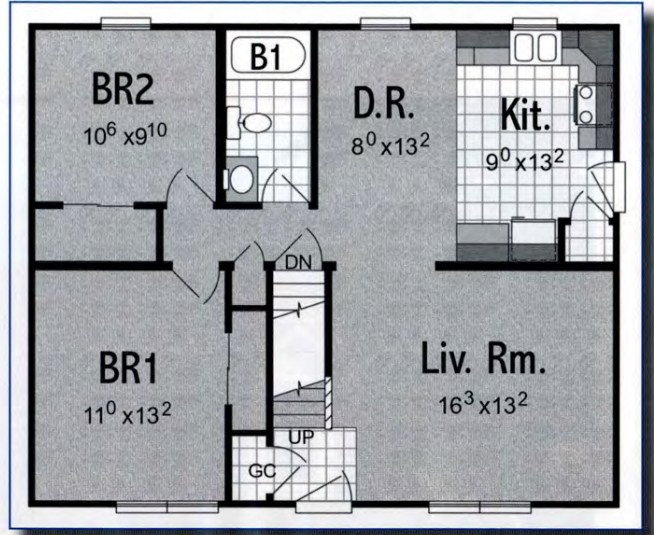
Cape Collins

1 BR - 1 BA
27' 6" x 36'
990 SF



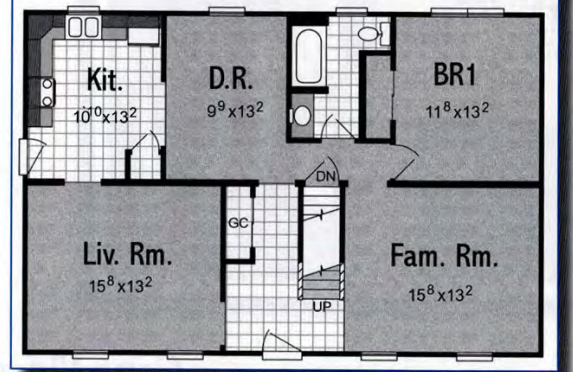
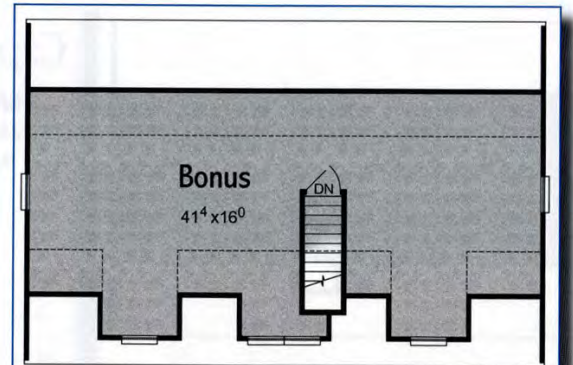
Cape Anne

2 BR - 1 BA
27' 6" x 34'
935 SF



Patriot I

2 BR - 1 BA
24' x 40'
960 SF

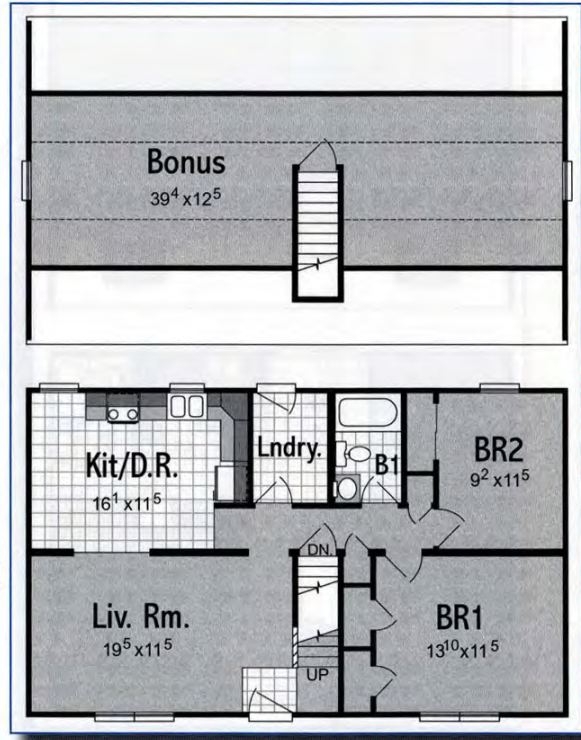
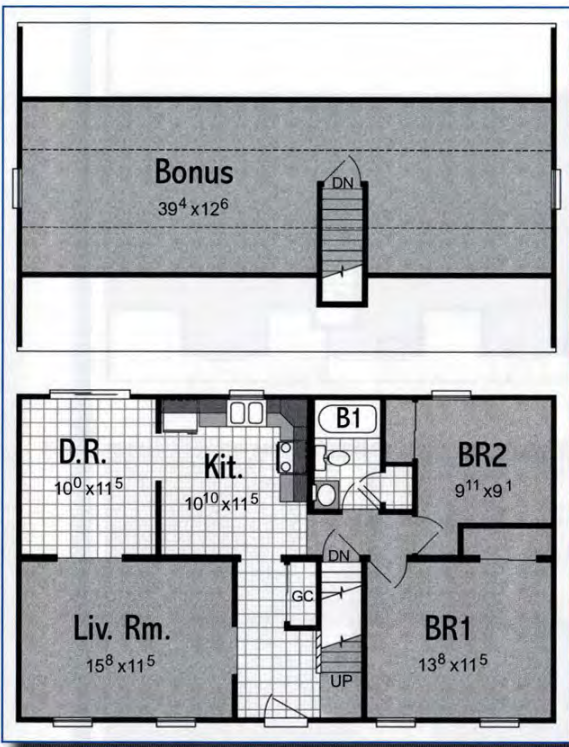


Cape Chelsey

1 BR - 1 BA
27' 6" x 42'
1155 SF

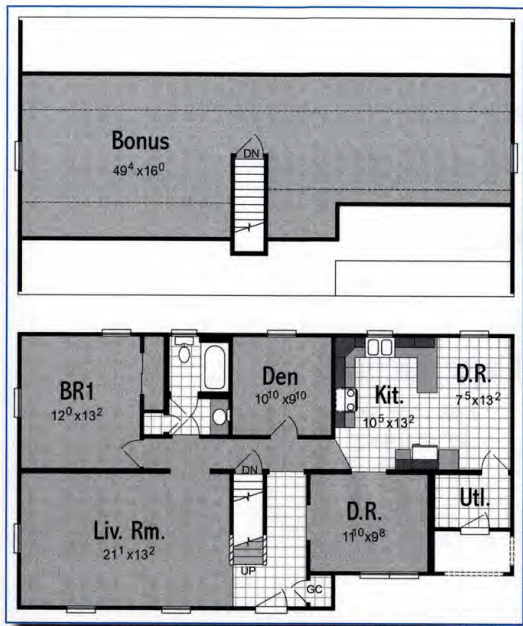
Cape May

2 BR - 1 BA
24' x 40'
960 SF



Cape Vincent

2 BR - 1 BA
24' x 40'
960 SF

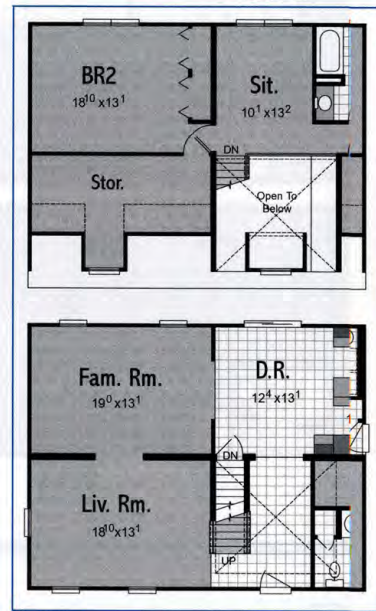


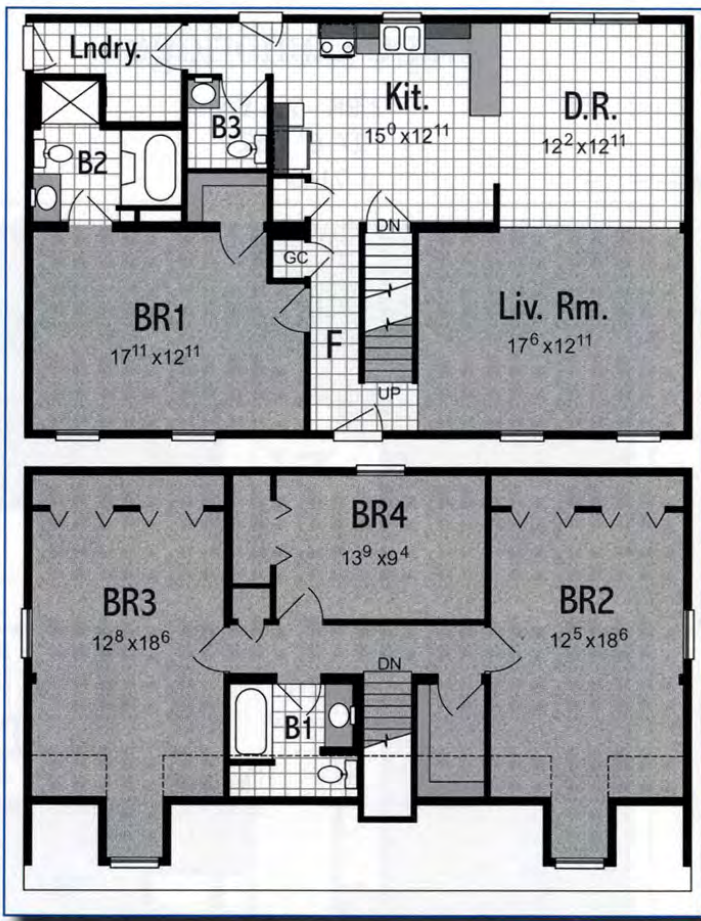
Cape Cod

1 BR - 1 BA
27' 6" x 50'
1375 SF

Cape Cambridge

3 BR - 2 1/2 BA
27' 6" x 52'
2145 SF





Cape Richard

4 BR - 2½ BA
 27' 6" x 44'
 2145 SF